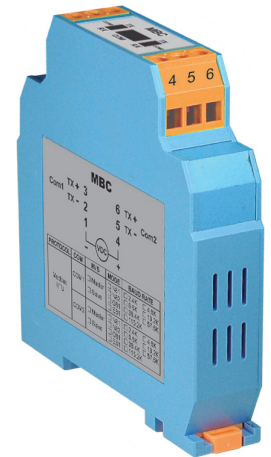
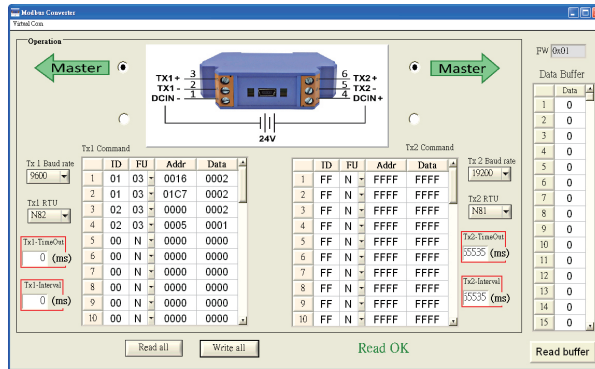
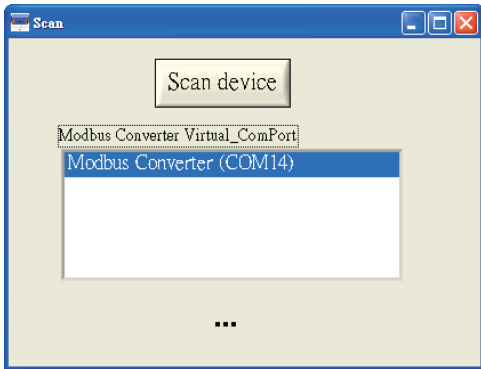


# MBC Programmable Modbus RS485 Data Link

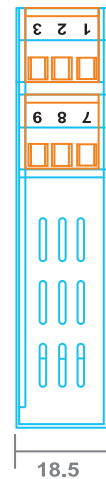
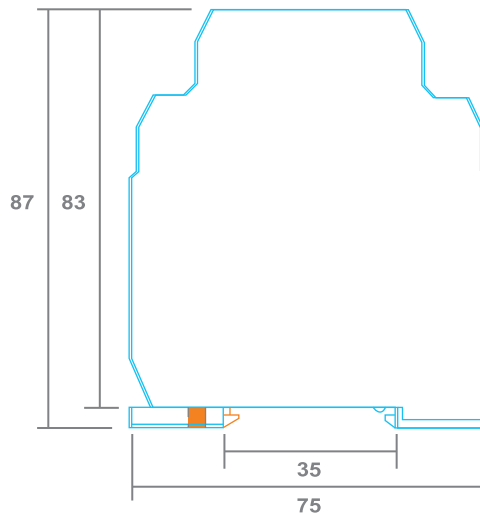
## Feature:

- ▶ Universal Modbus RTU master/slave communication.
- ▶ Data exchange between master to master or slave to slave.
- ▶ Support up to 115.2k bps baud rate.
- ▶ Communication between devices with various data format N82, O81, E81 and baud rate.
- ▶ Easy configuration with USB port.



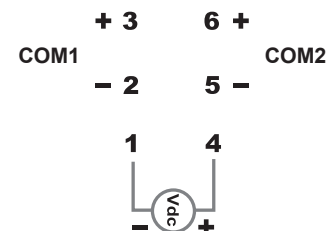
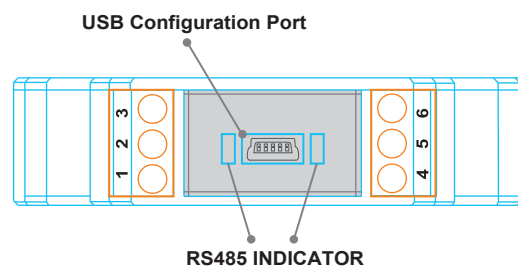
Specification	
COM1/COM2	Protocol: Modbus RTU
	Data Format: N,8,1; N,8,2; O,8,1; E,8,1
	Baud Rate: 2400, 4800, 9600, 19200, 38400, 57600, 115200
	Master/Slave Read/Write
Response	20~2000 ms
CMRR	> 80 dB
EMS	En 50081-2, En 50082-2
Isolation	2.8 KV. between input and output
Power	DC18~36V
Power Consumption	1.7W (max)
Operation Temp	-10 to 50°C
Humidity	0 to 90% RH
Dimension	75mm(W)x87mm(H)x18.5mm(D)

## Dimension



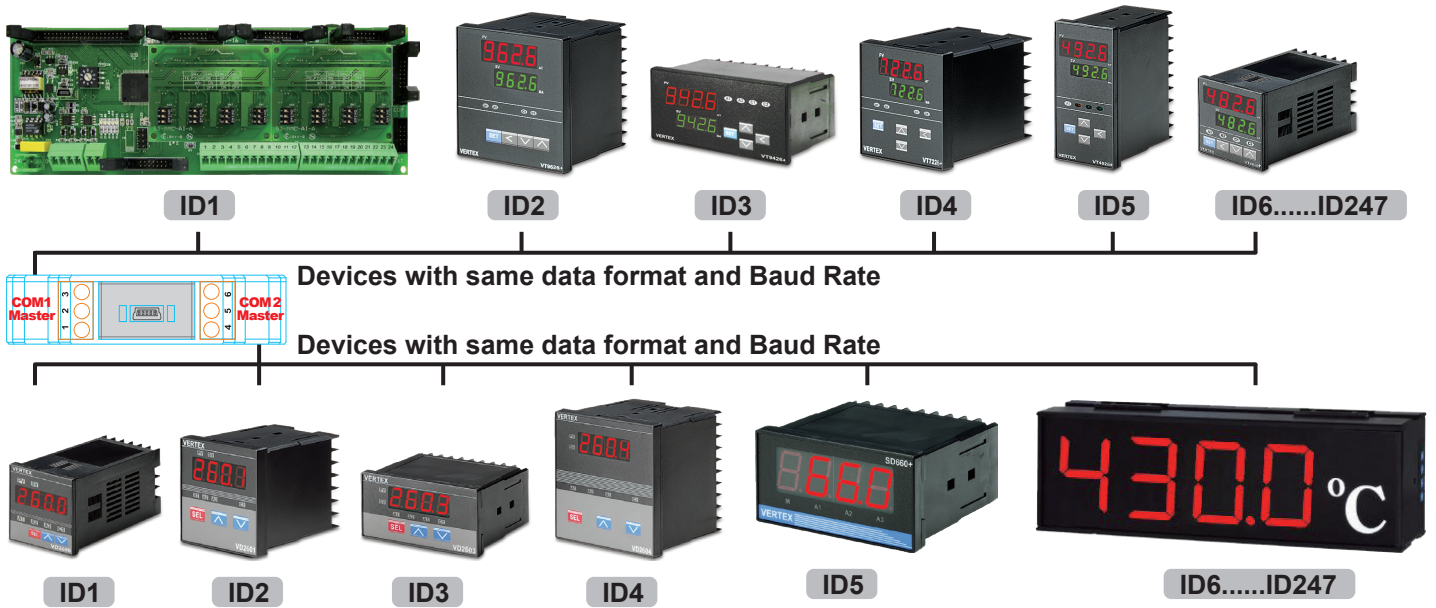
(Unit: mm)

## Wiring Diagram

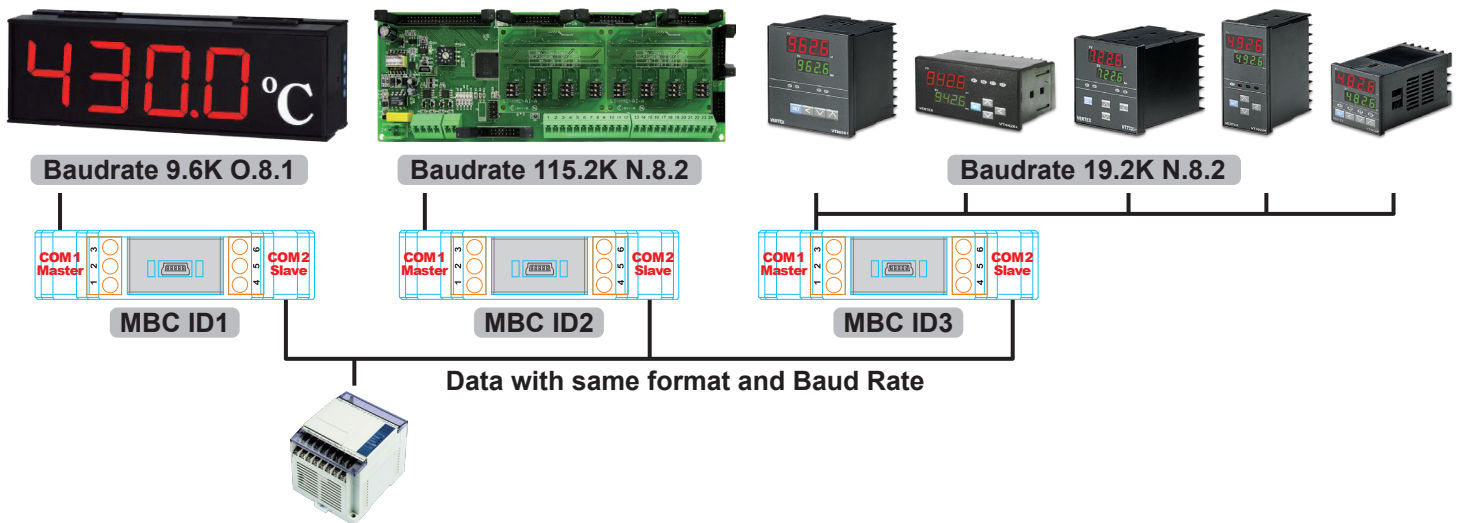


# Application

1. Master / Master mode : Data exchange between different groups of slave devices with different data format and/or baud rate.



2. Master / Slave mode : Convert all different data format of slave devices to comply with master device.



3. Data splitter.

